



## Female Incarceration: Breaking the Cycle



## **George Kaiser Family Foundation**

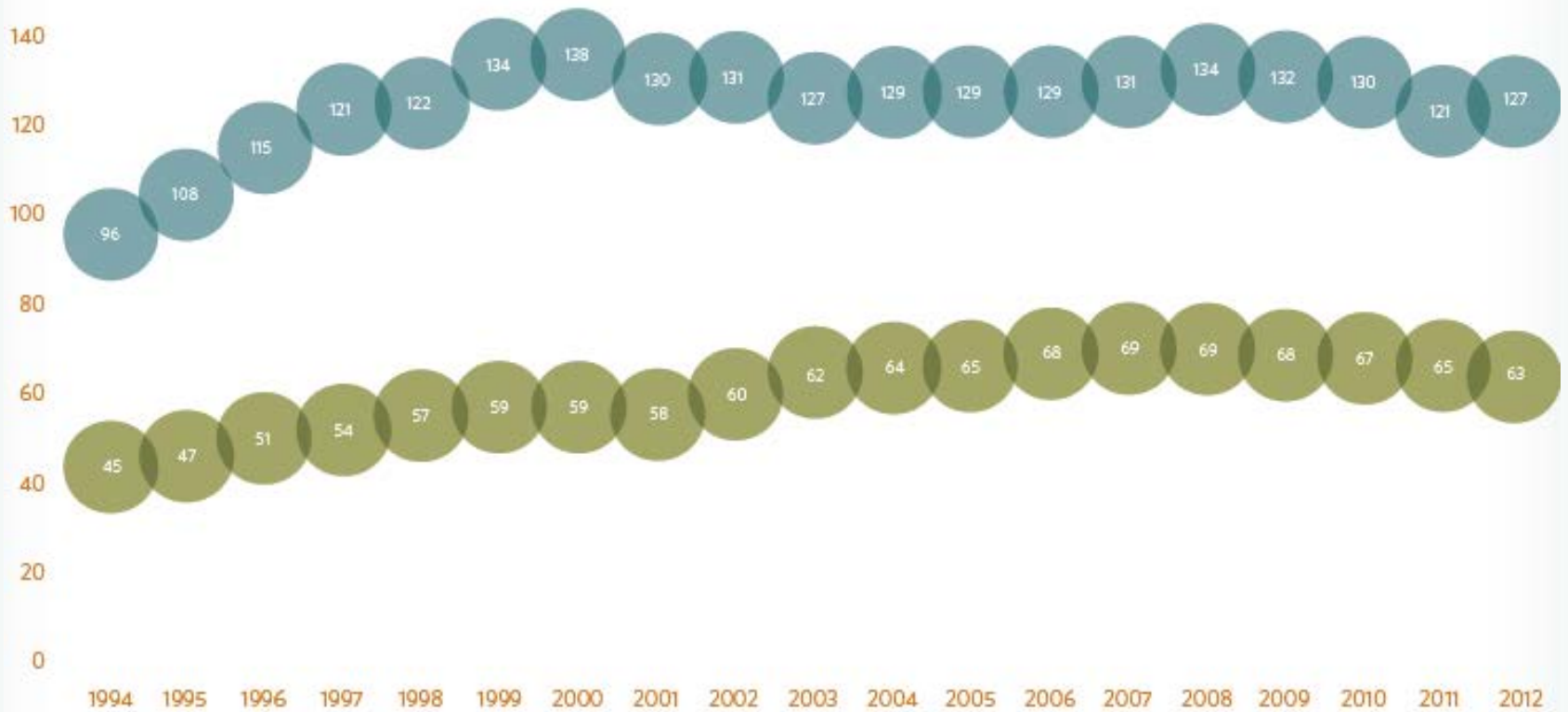
...places a strong emphasis on the important relationship between mother and child. Most of our activities surround the well-being of young children and families.



# Female Incarceration Rates

## Who leads the nation?

In almost any given year, Oklahoma is double the U.S. average.



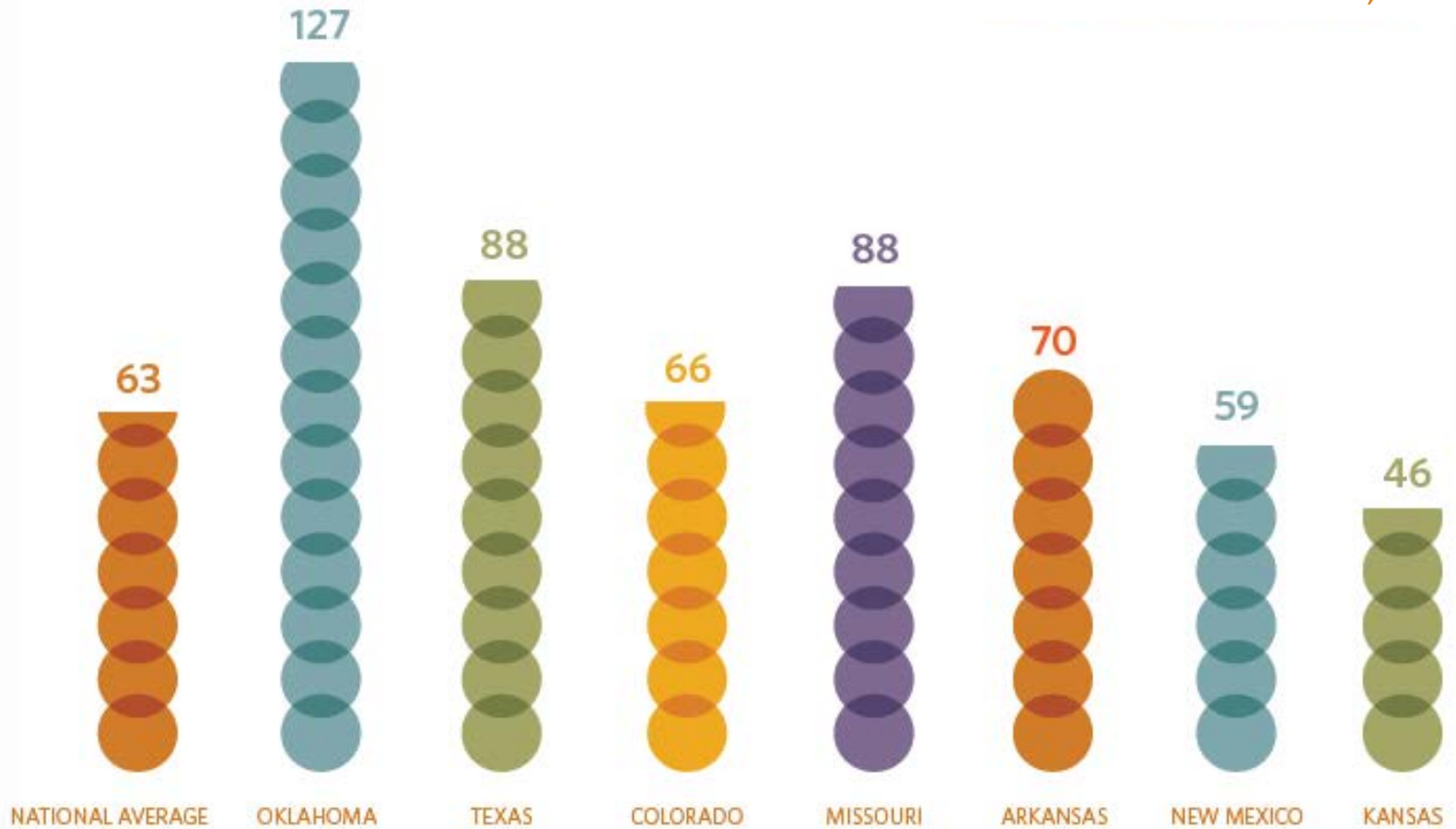
Source: Bureau of Justice Statistics

● U.S. TOTAL ● OKLAHOMA

# Incarceration Rate of Women

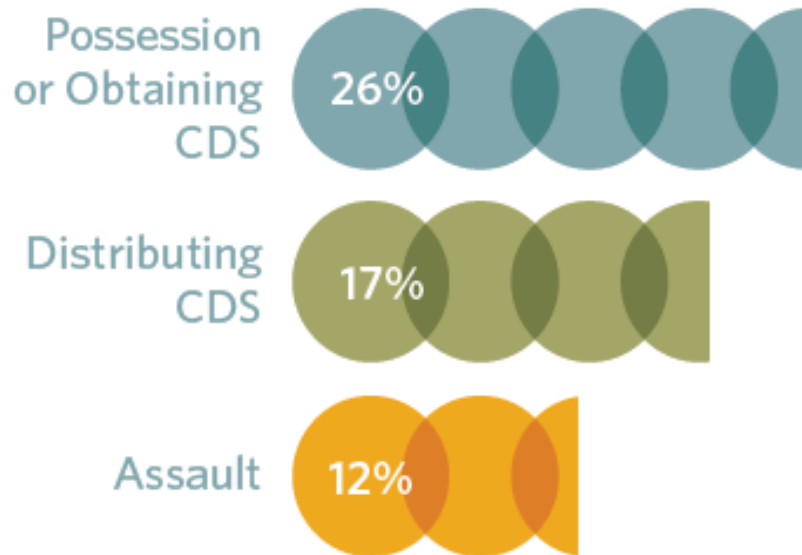
## Who leads the nation?

INCARCERATION RATE PER 100,000



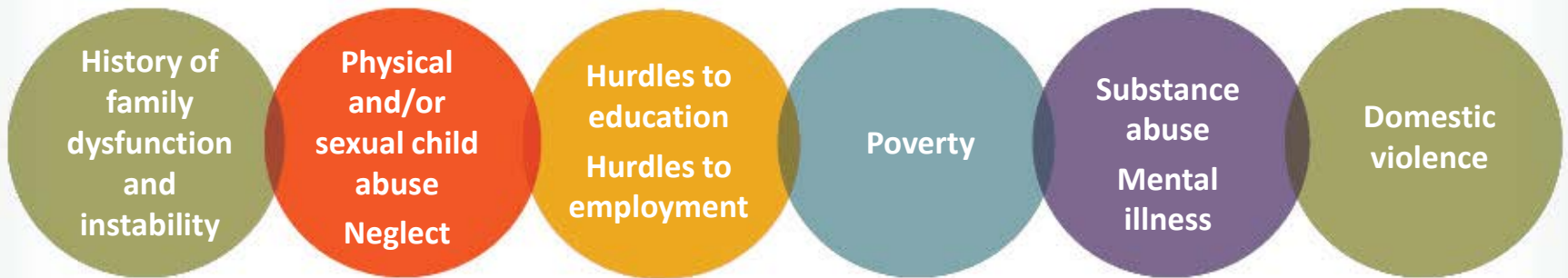
Source: Bureau of Justice Statistics

# Top 3 Offenses



1,152 women entered Oklahoma Department of Corrections. 212 were sent from Tulsa County.

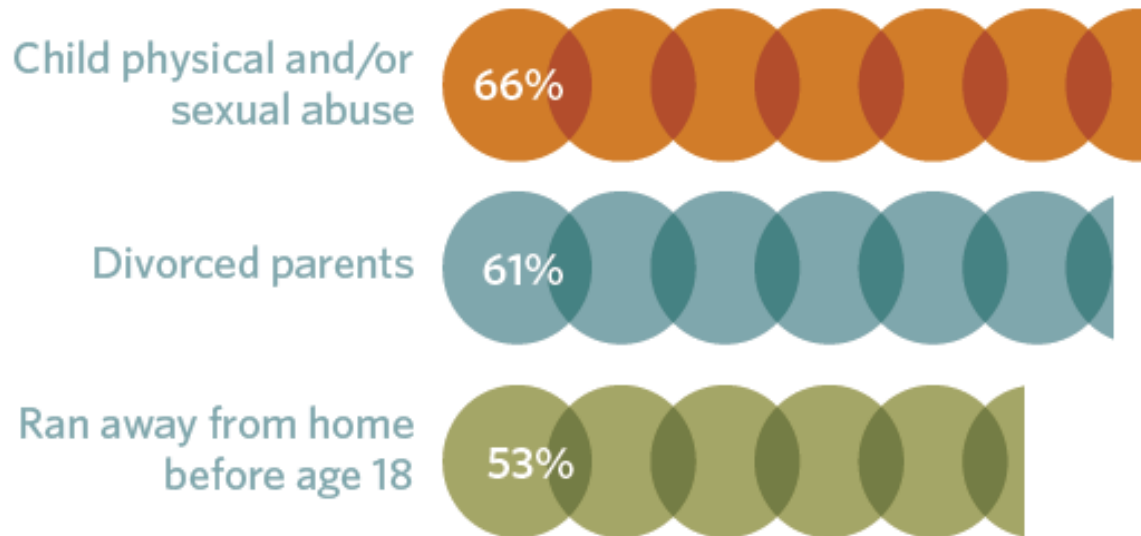
# Pathways to Incarceration



# Characteristics of Oklahoma's Female Offenders

## IN CHILDHOOD

---

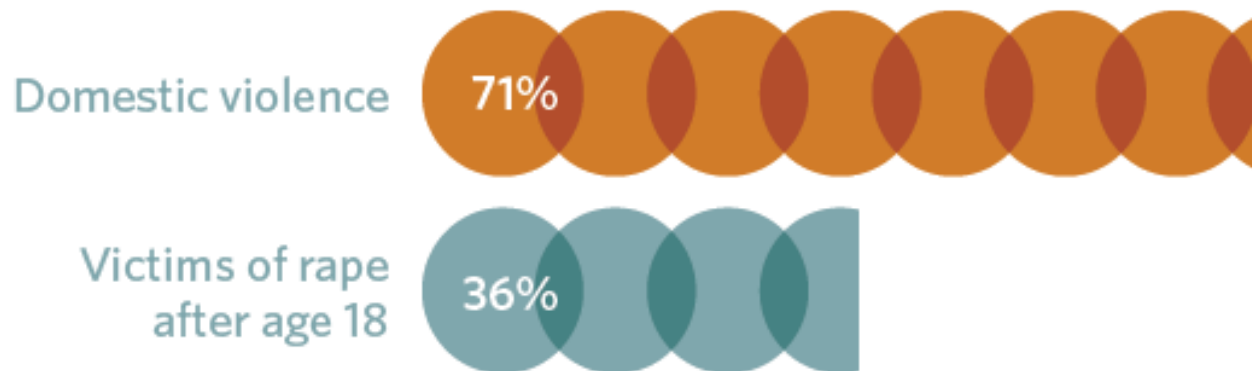


*Source: Oklahoma Study of Incarcerated Mothers and Their Children, January 22, 2010; Susan F. Sharp, Ph.D., Emily Pain, and the Oklahoma Commission on Children and Youth.*

# Characteristics of Oklahoma's Female Offenders

## IN ADULTHOOD

---



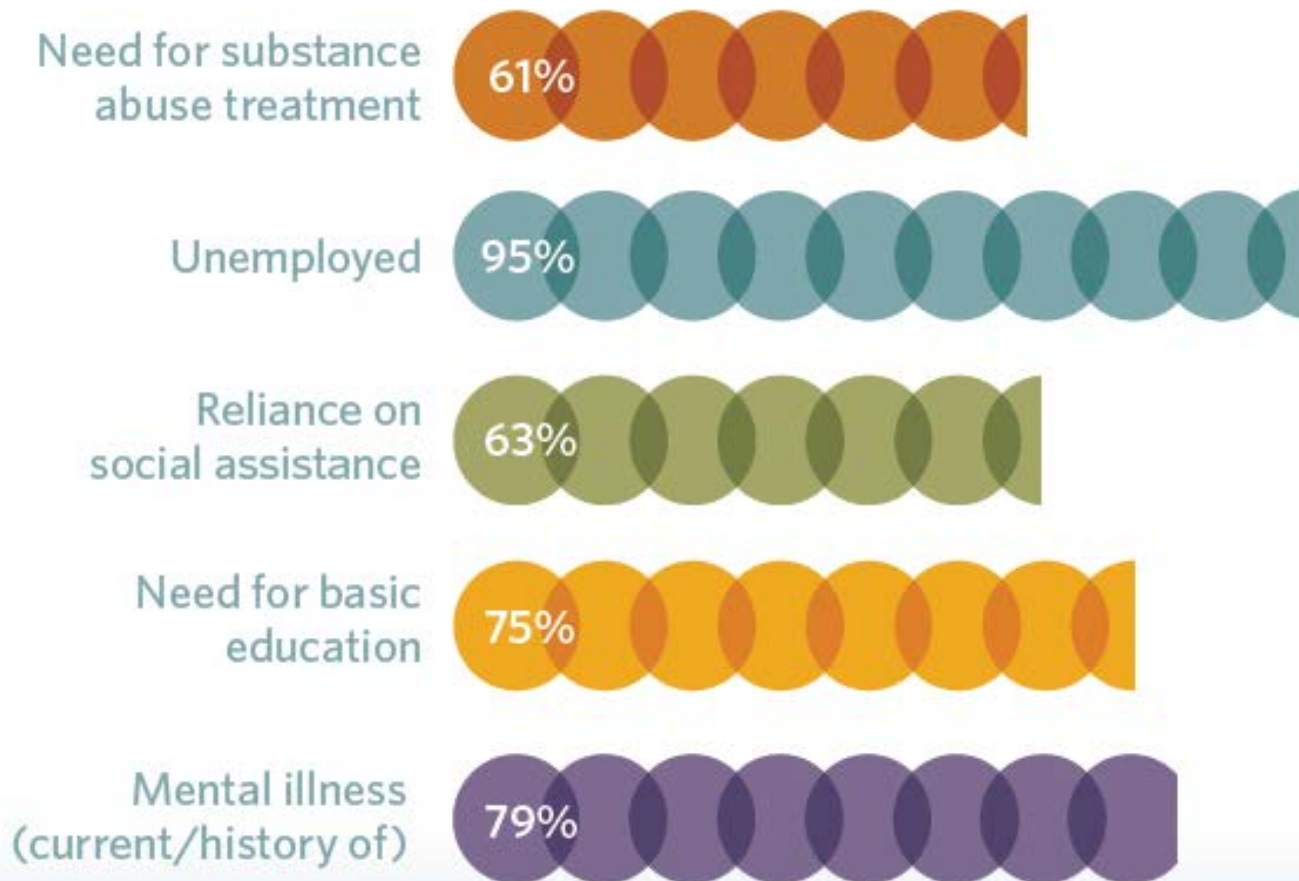
*Source: Oklahoma Study of Incarcerated Mothers and Their Children, January 22, 2010; Susan F. Sharp, Ph.D., Emily Pain, and the Oklahoma Commission on Children and Youth.*



# Characteristics of Oklahoma's Female Offenders

## AT RECEPTION (FY 2013)

---



# What about their families?

85%

Are mothers to a total of 6,825 children

- 4,464 under age 18
- 3 children per mother

55%

Of children have never visited their mother in prison

**Children of incarcerated parents are more likely to become incarcerated themselves.**



*Source 1: Oklahoma Study of Incarcerated Mothers and Their Children, January 22, 2010; Susan F. Sharp, Ph.D., Emily Pain and the Oklahoma Commission on Children & Youth*

*Source 2: In January 2012, ODOC and GKFF conducted a survey of the 2,333 women incarcerated on that date. 2,028 surveys were completed- a response rate of 86.9 percent.*



# What are the numbers?

## Total Female Population

2,889

## Prison Admissions

Statewide: 1,153

Tulsa County: 214

Oklahoma County: 192

## Prison Releases

Statewide: 1,078

Tulsa County: 214

Oklahoma County: 194



# What Works to Reduce Recidivism

1. Focus on the offenders most likely to commit crime      Who
2. Invest in programs that work, and ensure they are working well      What
3. Strengthen supervision and use swift and certain responses      How



# Policy Options

## Reduce Receptions

- Use of objective risk assessments to inform decisions
- Insufficient resources available to people under community supervision
- Swift and certain sanctions
- Provide treatment combined with supervision to high-risk, high-need individuals
- Incentive-based approaches
- Prohibition on probation on third or subsequent felony

# Policy Options

## Sentence Length

- **Mandatory minimums/one-size-fits-all mandates**
- **Judicial safety valve**

## Reduce Recidivism

- **Post-release supervision with resources to strengthen supervision**
- **Reduce employment barriers (e.g. licensed occupations; expungement; driver's license)**
- **Fines/fees**

## Meet Andrea.



### Before

- 23 years in addiction
- 362 days in county jail awaiting trial
- Unemployed for 10 years
- Very limited contact with child



## After

- Sanitation Associate for Bama Companies
- Full-time employee with benefits
- Involved in the life of her daughter and active grandmother to her beautiful thriving grandchild
- Over 4 years of sobriety
- Successful reunification with immediate and extended family